

Can You Label All Parts of This Pony?

Horse Parts: Whole Horse Wrap-Up

After reviewing all the individual sections of the Horse Parts Series (Head, Hoof, Body, Legs) give each student the Whole Horse picture and the word bank (pages 2 and 3). Ask the students to write in the names of as many horse parts as they can without using the work bank. Use the word bank for extra help. Print one copy of page 4 for the teacher/leader as an answer sheet.

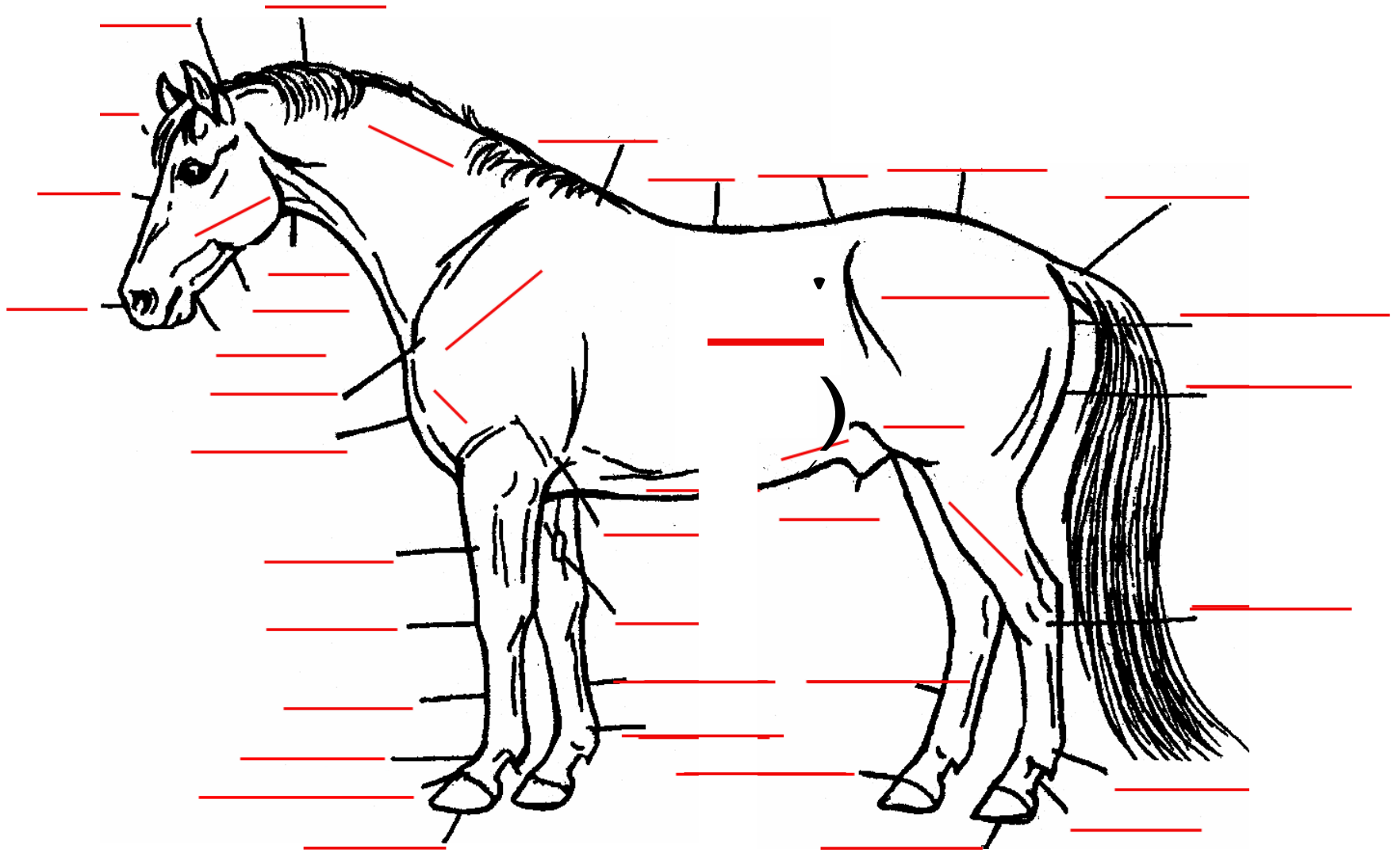
Page 2 – the Whole Horse picture with lines to fill in with the name of the part.

Page 3 – the Horse Parts Word Bank

Page 4 – the teacher's answer sheet

Can You Label All Parts of This Pony?

Write the name of each part on the red line that points to it. Use the word bank ONLY if you can't remember a part-see if you can do the whole pony without using the word bank!



Can You Label All Parts of This Pony?

arm

back

barrel

belly

buttock

cannon bone (fore)

cannon bone (hind)

cheek

chest

chestnut

chin groove

coronary band (fore)

coronary band (hind)

crest

croup

dock

elbow

face

fetlock joint (fore)

fetlock joint (hind)

flank forearm

forelock

gaskin

hindquarters

hock

hoof (fore)

hoof (hind)

jaw

knee

loin

mane

muzzle

pastern (fore)

pastern (hind)

point of buttock

point of shoulder

poll

sheath

shoulder

stifle

tendons

throttle

withers

USPC Rating Requirements:

D1 - Name any 10 parts of the mount

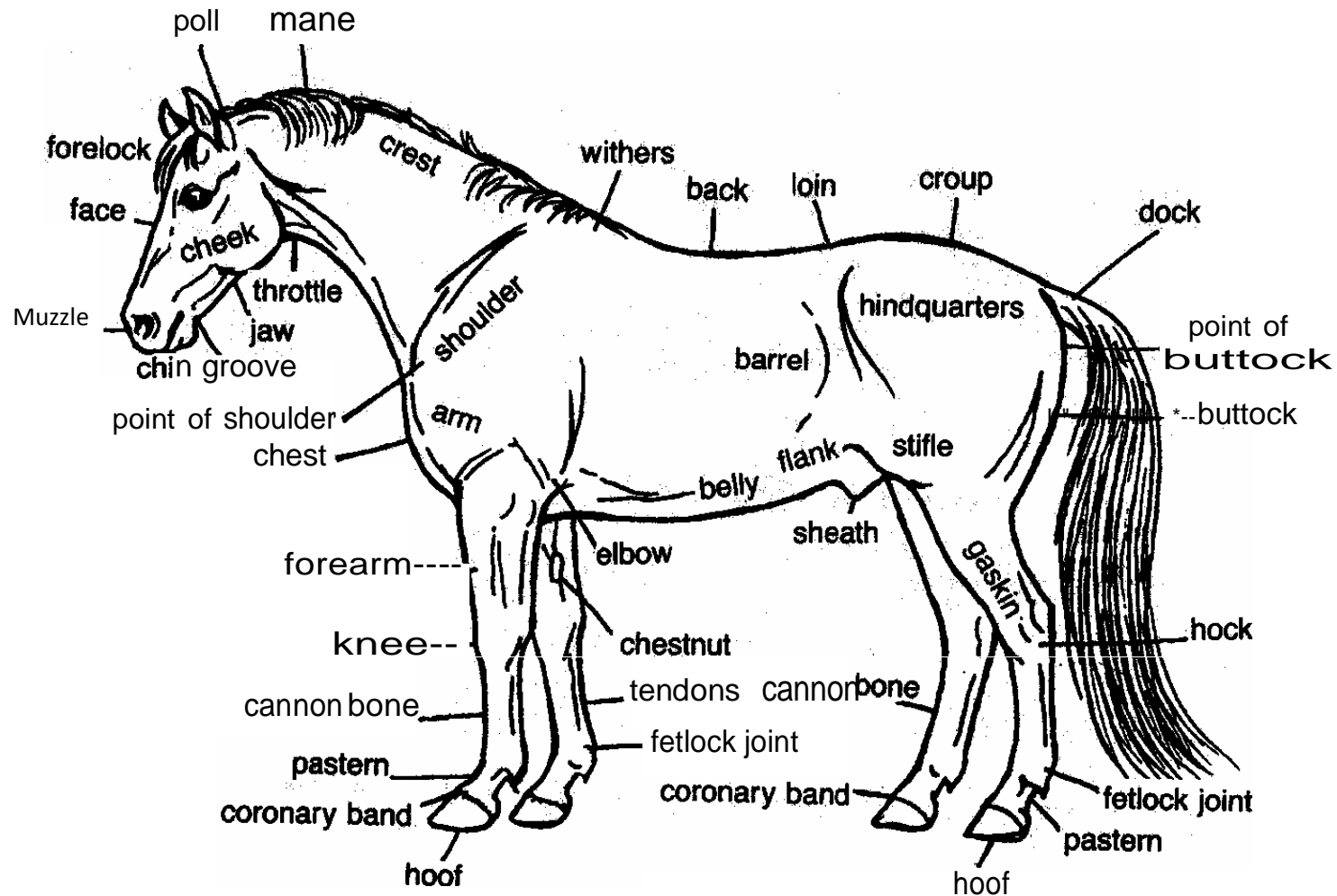
D2 - Name and locate any 15 parts of the mount.

D3 - Name three parts of the hoof.

C2 - Discuss angles of shoulder and hip of own mount.

Can You Label All Parts of This Pony?

Teacher Answer Sheet



USPC Rating Requirements:

D1 - Name any 10 parts of the mount

D2 - Name and locate any 15 parts of the mount.

D3 - Name three parts of the hoof.

C2 - Discuss angles of shoulder and hip of own mount.